

REGULAR MEETING  
MARCH 10, 2008  
9:00 A.M.

BOOK

28 PAGE 232

The Lafayette County Commission met on the above date and hour for a regular scheduled meeting. The meeting was held in the commissioner's meeting room at the Courthouse in Mayo, Florida. The following members were present: Commissioner Charles Driver, Dist. 1; Commissioner Thomas E. Pridgeon, Dist. 2; Commissioner Donnie Hamlin, Dist. 3; Commissioner Jack Byrd, Dist. 4; Commissioner Earnest Jones, Dist. 5; and Lafayette County Attorney Leenette McMillan.

### MINUTES

On a motion by Mr. Driver and a second by Mr. Pridgeon, the board voted unanimously to approve the minutes.

### LIGHTS AT INDUSTRIAL PARK BUILDING

David Tyre with BRAE, Inc. and Ed Iwanowski, a representative for Western Florida Lighting, discussed the situation with the lighting at the new building in the Industrial Park. Mr. Iwanowski offered to send new fixtures and lamps at no cost to the county. (See attached.)

### COUNTY DRIVEWAY SIZE FOR EMERGENCY VEHICLES

Mr. Donnie Land discussed standardizing the size of driveways for emergency vehicles to fit through. The board requested that Mr. Land get together some information for them to review before a decision is made.

### FEBRUARY SOLID WASTE/BUILDING DEPARTMENT REPORTS

On a motion by Mr. Pridgeon and a second by Mr. Hamlin, the board voted unanimously to approve the February Solid Waste/Building Department reports.

### WARRANT LIST

On a motion by Mr. Jones and a second by Mr. Hamlin, with the exception of the Byrd's Power Equipment bill and the Pridgeon's Garage bill, the board voted unanimously to approve the following bills:

General Fund - \$510,599.62

Industrial Park Fund - \$7.05

On a motion by Mr. Driver and a second by Mr. Hamlin, with Mr. Byrd and Mr. Pridgeon abstaining, the board voted unanimously to approve the Byrd's Power

Equipment bill in the amount of \$24.20 and the Pridgeon's Garage bill in the amount of \$111.53.

**RE-APPOINT RICKY LYONS TO SREC BOARD OF DIRECTORS**

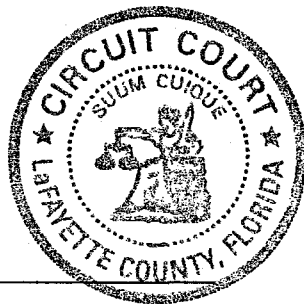
On a motion by Mr. Driver and a second by Mr. Hamlin, the board voted unanimously to re-appoint Ricky Lyons to the Suwannee River Economic Council Board of Directors.

**SECOND BOARD MEETING IN MAY**

On a motion by Mr. Driver and a second by Mr. Hamlin, the board voted unanimously to move the second meeting in May from the 26<sup>th</sup> to the 27<sup>th</sup> at 5:30 p.m.

**ADJOURN**

On a motion by Mr. Jones and a second by Mr. Pridgeon, the board voted unanimously to adjourn.



Attest:

Ricky Lyons  
Ricky Lyons, Clerk

T. Jack Byrd  
T. Jack Byrd, Chairman

Approved this 24<sup>th</sup> day of May, 2008.







# Florida Department of Transportation

CHARLIE CRIST  
GOVERNOR

1109 S. Marion Avenue  
Lake City, Florida 32025-5874

STEPHANIE C. KOPELOUSOS  
SECRETARY

February 26, 2008

The Honorable Jack Byrd, Chairman  
Lafayette County Board of County Commissioners  
Post Office Box 88  
Mayo, Florida 32066

**Subject: Additions to the Tentative 5-Year Work Program (FY 2008/2009 – 2012/2013)**

Dear Chairman Byrd:

As part of our continued coordination, we wanted to inform you of projects that the Department has added to the Tentative 5-Year Work Program since the Work Program Public Hearings were held. The changes are outlined below.

### ADDITIONS TO TENTATIVE 5-YEAR WORK PROGRAM

PROGRAM	PROJECT NUMBER	WORK ACTIVITY	ROADWAY	FROM:	TO:	AMOUNT		
						FY 2009	FY 2010	FY 2011
GRSC	424339-1	Construction	CR 251	US 27/SR 20 N	CR 250			\$ 2,859,600.00
SCOP	424332-1	Construction	CR 361 & 371	CR 354 S	SE Jim Lane			\$ 751,800.00
SCRA	424347-1	Construction	CR 420	US 27/SR 20	CR 405 West		\$ 395,000.00	
SCRA	424349-1	Construction	CR 300	CR 534 South	Intersection of CR 320		\$ 386,112.00	

- SCOP Small County Outreach Program
- Small County Outreach Program - General Revenue \$s from Senate Bill 360
- GRSC
- SCRA Small County Road Assistance Program
- CIGP County Incentive Grant Program
- TRIP Transportation Regional Incentive
- SB Scenic Byways

All of these projects are contingent upon approval by the Legislature, fund appropriation and inclusion in the adopted version of the Florida Department of Transportation's 5-Year Work Program (FY 2008/2009 – 2012/2013).

Should you have questions or need additional information, I can be reached at 1-800-749-2967, Extension 7884.

Sincerely,

Jordan L. Green, P.E.  
Rural Area Transportation Development Engineer

JLG:ks

CC: Ricky Lyons, County Coordinator/Clerk  
Taylor McGrew, Mayor Town of Mayo



Windows Live™

BOOK

28 PAGE 237

**RE:**

**From:** McCall, Rebecca (rmccall@hubbell-ltg.com)  
**Sent:** Thu 3/06/08 10:35 AM  
**To:** BRAE Inc. (braeinc@hotmail.com); Dan Scoglio (dan.scoglio@hdsupply.com); Western Florida Lighting, Ed Iwanowski (ed@wflinc.com); Keith Tate (keith.tate@hdsupply.com)  
**Attachments:** ki4-248ho.pdf (178.4 KB)

Security scan upon download

Yes, I will be sending you a more formalized proposal once I have all of the required information from Engineering (very soon). The short story – the fixture returned works fine under “normal” conditions. In order to duplicate the problem you are having, we would need to do longer testing (which we plan to do). However, knowing you are in a tight situation, we are willing to replace the existing fixtures with our KL fixture (similar configuration – I see attached spec sheet) but with the HO ballast rather than the VHO ballast. We will provide the labor to change these BUT I will need an estimate of the cost to approve (rate, estimated time, etc). I will follow-up with further details (probably after lunch time).

*Rebecca McCall*

**From:** BRAE Inc. [mailto:braeinc@hotmail.com]  
**Sent:** Thursday, March 06, 2008 10:24 AM  
**To:** Dan Scoglio; Western Florida Lighting; Ed Iwanowski; Keith Tate; McCall, Rebecca  
**Subject:**

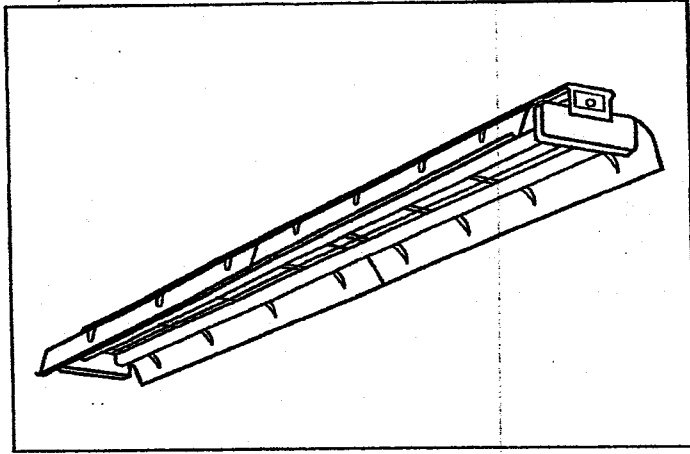
Any update on the lights? Its getting VERY close to our deadline. We need to know something TODAY without fail!!!

Thanks,  
Jenna

Climb to the top of the charts! Play the word scramble challenge with star power. [Play now!](#)

\*\*\*\*\*  
 This email and any files transmitted with it are confidential and intended solely for the use of the individual or entity to whom they are addressed. If you have received this email in error please notify the system manager. This footnote also confirms that this email message has been swept for the presence of computer viruses.  
 www.Hubbell.com – Hubbell Incorporated\*\*

?



**KL4-248HO**  
**KL8-296HO**  
**DYNAMO INDUSTRIAL**  
**TWO LAMP**  
**HIGH OUTPUT**

Type: \_\_\_\_\_

Job Description: \_\_\_\_\_

**FEATURES:**

- Available in 4' and 8' lengths.
- Reflectors have 15% uplight.
- Spring loaded turret lampholders.
- 6" lamp spacing.
- For individual or continuous row mounting.
- Channel ends double as joiners.
- Reflector end closures available.

**SPECIFICATIONS:**

**Housing**

Heavy steel with longitudinal reinforcing ribs for extra strength.

**Reflector**

Die embossed with transverse ribs for maximum rigidity. Smooth extruded apertures for 15% uplight.

**Ballasts**

800 Ma High Output, thermally protected, automatic resetting, Class P, high power factor, UL listed, unless otherwise specified. HO ballasted fixtures should not be surface mounted due to overheating.

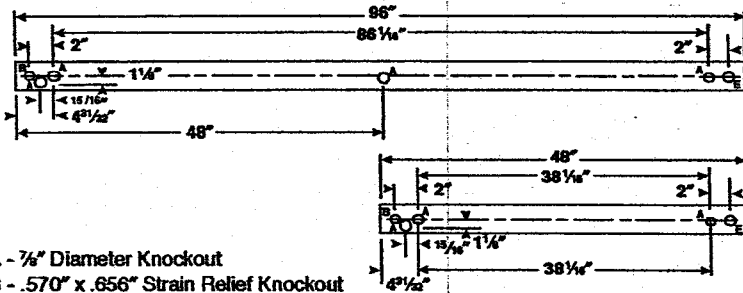
**Finish**

All parts pre-painted with high gloss baked white enamel, minimum reflectance 86%, applied over iron phosphate pre-treatment for maximum adhesion and rust resistance.

**Labels**

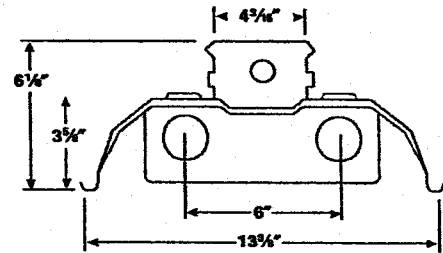
All fixtures carry the UL label. (CSA approval available. Use Suffix "CSA").

**Cross Section**

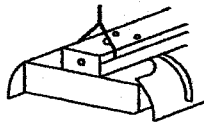


- A - 7/8" Diameter Knockout
- B - .570" x .656" Strain Relief Knockout
- E - 1 1/2" Diameter Knockout

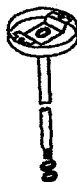
Note: All dimensions are in inches; dimensions are subject to change without notice. Please consult factory or check sample for verification.



**Mounting Accessories**



KHCD



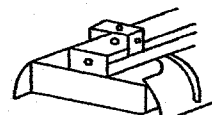
S18



KZTF



KZT



KTH

Photometric Report No. 10244



Environmental Laboratories

PO Box 2897 (8422) 2200 North Scharf Road Spartanburg, SC 29329

REPORT # 10244  
DATE: 10/12/92

LUMINAIRE: KL8-296HO-120-UVF

1' x 8' 2-L HIGH OUTPUT INDUSTRIAL W/WHITE PAINT APERTURED REFL  
BALLAST: 480-X-LH-IC-P; LAMPS: F96T12/HO; RFI .93; WATTS: 252  
LAMPS RATED AT 8000 LUMENS EACH  
LUMINOUS AREA: 9A K 12-23

REFLECTANCE: DME: .08

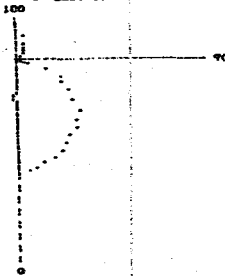
MOUNTING: PENDANT

S/W: PARL 1.28 NORM 1.29

SHIELDING: PARL 5 NORM 15

**CANDLEPOWER**

DEG	0	22.5	45	67.5	90
0	4137	4137	4137	4137	4137
5	4096	4104	4101	4093	4065
15	3966	3923	3907	3896	3873
25	3700	3628	3628	3650	3681
35	3508	3231	3291	3324	3342
45	2800	2749	2857	3043	3098
55	2190	2185	2461	2502	2499
65	1504	1608	1762	1801	1828
75	796	958	1160	1189	1143
85	185	267	288	274	260
90	20	91	121	137	143
95	48	94	131	133	129
105	190	88	212	292	294
115	448	165	121	151	160
125	739	312	180	133	136
135	1016	488	340	265	242
145	1233	725	522	442	425
155	1344	970	747	650	639
165	1409	1280	1111	1026	1022
175	1379	1411	1439	1436	1479
180	1370	1387	1490	1506	1487



**ZONE SURVEY**

ZONE	LUMENS	LAMP	FEET
0-30	3173	18.0	21.1
0-40	5239	29.8	34.8
0-60	9293	54.9	63.7
0-90	12712	77.2	94.4
90-120	533	3.0	3.5
90-130	777	4.4	5.2
90-150	1502	8.5	10.0
90-180	2349	13.3	15.6
0-180	15061	85.6	100.0

This photometric test was performed using a specific ballast/lamp combination. Extrapolation of these data for other ballast/lamp combinations may produce erroneous results. The ballast factor must be applied to the lumens output rating assigned to the lamp(s) or to the candlepower values shown. Luminaire efficacy rating (LER) per MESA LES-1973.

LER = F1 57

PREPARED BY: R.K. APPROVED BY: [Signature]

TEST RUN IN ACCORDANCE TO CURRENT I.F.R. PUBLISHED PROCEDURES

Coefficients of Utilization

RC RW	Zonal Cavity Method								Floor Reflectance - .20			
	80				70				50			
	70	50	30	10	70	50	30	10	50	30	10	0
1	90	86	83	79	87	83	80	77	77	74	72	61
2	82	75	70	65	79	72	67	63	67	63	60	51
3	75	66	59	54	72	64	58	53	59	54	50	43
4	68	59	51	46	66	57	50	45	53	47	43	37
5	62	52	44	38	60	50	43	38	46	41	36	31
6	57	46	38	33	55	44	37	32	42	36	31	26
7	53	41	34	28	50	40	33	28	37	31	27	23
8	48	37	30	25	46	36	29	24	34	27	23	20
9	45	33	26	21	43	32	25	21	30	24	20	17
10	41	30	23	19	40	29	23	18	27	22	18	15

Energy Data

LER: F1-57                      Energy Cost: \$4.21\*  
Input Watts: 252                BF: .95

The above energy calculations were conducted using a specific lamp/ballast combination. Actual results may vary depending upon the lamp and ballast used. Lamp and ballast specifications are subject to change without notice.

\*Comparative annual lighting energy cost per 1000 lumens based on 3000 hours and \$0.08 per KWH.

**Ordering Information**

Example: KL8-296HO-120-GLR

**Series**

KL

**Size**

4 - 4'  
8 - 8'

**No. of Lamps  
in Cross Section**

2 - Two

**Lamp Type**

48HO - 48" T12, High Output  
96HO - 96" T12, High Output

**Reflector Type**

Blank - Apertured Reflector for Uplight (Standard)  
(Solid top not recommended with HO & VHO units.)

For complete list of options and accessories, see options and accessories section.

**Voltage**

120 - 120V  
277 - 277V  
347 - 347V

**Ballast**

E - Electronic T12, Instant Start, -20°F\*  
LE - Energy Saving Magnetic T12 (8' only)  
For a specific ballast vendor, show as option.

**Industrial Options**

- GLR - Fast Blow Fuse
- GMF - Slow Blow Fuse
- EL - Emergency Battery Pack
- BC - Branch Circuit Plug-on Wiring System (See options section for details.)
- CSA - UL listed or CSA certified for Canada
- PAF - Paint After Fabrication

**Industrial Accessories**

**Order Separately**

- KZTF - Zip Tee Hanger - Flush Mounting on T-bar Ceiling
- KZT - Zip Tee Hanger - 1 1/2" Spacer on T-bar Ceiling
- KTH - Slide Clamp Tong Hanger
- S18 - 18" Stem, Canopy and 8" Aligner
- SS18 - 18", 45° Swivel Stem & Canopy
- KHC - 24" Chain Hanging Assembly
- KLEC - Reflector End Closure
- KLWG4 - Wire Guard 4" lg. - 2 required per 8' fixture





**LAFAYETTE COUNTY BUILDING  
DEPARTMENT**

120 West Main Street  
PO Box 28  
Mayo, Florida 32066  
Phone (386)294-4403  
Fax (386)294-4225  
lafayettebuildingdept@alltel.net

April 3, 2007

RE: WIRING OF BUILDING AT INDUSTRIAL PARK

**LIGHT FIXTURE PACKAGE:**

- SIX (6) LOW PRESSURE SODIUM (35) WATT WALL MOUNTED  
FIXTURES (220 VOLTS) TWO ON SIDES AND ONE ON EACH END -  
WIRE TO PHOTOCELL**
  
- TWENTY-THREE (23) VHO FLUORESCENT LIGHT FIXTURES - TWENTY  
WITH REFLECTORS - THREE INSTALLED IN OFFICE AREA W/O  
REFLECTORS**
  
- NINETY (90) CFM EXHAUST FAN IN BATHROOM - FOUR FOOT  
FLUORESCENT ( 2 BULB) LIGHT FIXTURE**



**APPOINTED OFFICERS (continued)**

- A copy of the form must be provided immediately to the other members of the agency.
- The form must be read publicly at the next meeting after the form is filed.

**IF YOU MAKE NO ATTEMPT TO INFLUENCE THE DECISION EXCEPT BY DISCUSSION AT THE MEETING:**

- You must disclose orally the nature of your conflict in the measure before participating.
- You must complete the form and file it within 15 days after the vote occurs with the person responsible for recording the minutes of the meeting, who must incorporate the form in the minutes. A copy of the form must be provided immediately to the other members of the agency, and the form must be read publicly at the next meeting after the form is filed.

**DISCLOSURE OF LOCAL OFFICER'S INTEREST**

I, THOMAS E. PRIDGEON, JR., hereby disclose that on 3-10, 20 08:

(a) A measure came or will come before my agency which (check one)

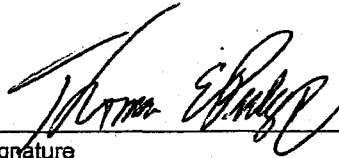
- inured to my special private gain or loss;
- inured to the special gain or loss of my business associate, \_\_\_\_\_;
- inured to the special gain or loss of my relative, \_\_\_\_\_;
- inured to the special gain or loss of \_\_\_\_\_, by whom I am retained; or
- inured to the special gain or loss of \_\_\_\_\_, which is the parent organization or subsidiary of a principal which has retained me.

(b) The measure before my agency and the nature of my conflicting interest in the measure is as follows:

An invoice payable to Pridgeon Garage was voted on and approved by the Commission.

3-10-08

Date Filed



Signature

NOTICE: UNDER PROVISIONS OF FLORIDA STATUTES §112.317, A FAILURE TO MAKE ANY REQUIRED DISCLOSURE CONSTITUTES GROUNDS FOR AND MAY BE PUNISHED BY ONE OR MORE OF THE FOLLOWING: IMPEACHMENT, REMOVAL OR SUSPENSION FROM OFFICE OR EMPLOYMENT, DEMOTION, REDUCTION IN SALARY, REPRIMAND, OR A CIVIL PENALTY NOT TO EXCEED \$10,000.



**APPOINTED OFFICERS (continued)**

- A copy of the form must be provided immediately to the other members of the agency.
- The form must be read publicly at the next meeting after the form is filed.

**IF YOU MAKE NO ATTEMPT TO INFLUENCE THE DECISION EXCEPT BY DISCUSSION AT THE MEETING:**

- You must disclose orally the nature of your conflict in the measure before participating.
- You must complete the form and file it within 15 days after the vote occurs with the person responsible for recording the minutes of the meeting, who must incorporate the form in the minutes. A copy of the form must be provided immediately to the other members of the agency, and the form must be read publicly at the next meeting after the form is filed.

**DISCLOSURE OF LOCAL OFFICER'S INTEREST**

I, JACK BYRD, hereby disclose that on 3-10, 20 08:

(a) A measure came or will come before my agency which (check one)

- inured to my special private gain or loss;
- inured to the special gain or loss of my business associate, \_\_\_\_\_;
- inured to the special gain or loss of my relative, \_\_\_\_\_;
- inured to the special gain or loss of \_\_\_\_\_, by whom I am retained; or
- inured to the special gain or loss of \_\_\_\_\_, which is the parent organization or subsidiary of a principal which has retained me.

(b) The measure before my agency and the nature of my conflicting interest in the measure is as follows:

An invoice payable to Byrd's Power Equipment was voted on and approved.

Date Filed

3/10/08

Signature

*Jack Byrd*

NOTICE: UNDER PROVISIONS OF FLORIDA STATUTES §112.317, A FAILURE TO MAKE ANY REQUIRED DISCLOSURE CONSTITUTES GROUNDS FOR AND MAY BE PUNISHED BY ONE OR MORE OF THE FOLLOWING: IMPEACHMENT, REMOVAL OR SUSPENSION FROM OFFICE OR EMPLOYMENT, DEMOTION, REDUCTION IN SALARY, REPRIMAND, OR A CIVIL PENALTY NOT TO EXCEED \$10,000.